

Step 5: Fixing Shower Cubicle and Shower Door

- Slide shower into correct position against wall
- Ensure that shower tray is horizontally level (photo 6)
- Ensure shower sides are vertically level (photo 7)
- Fix top of shower side panels and/or shower back panel to wall with L-brackets
- Adjust door so that it is vertically and horizontally level and ensure it opens and closes easily. Rivet or screw shower door to U-channel (photo 8) at top and bottom from inside of shower



Step 6: Finishing

- Adjust door hinges if necessary (photo 9)
- Apply high quality silicone to join between shower back and shower sides (photo 10)



Note: Plumbing connections to be done according to SABS specifications by qualified plumber.

geza 
BATHROOM AND KITCHEN SOLUTIONS

Shower Cubicle Assembly

No pipes in walls
No tiling
Installation cost saving
Suitable on wooden floors



Tel: +27 (0) 11 622 2004
Fax: +27 (0) 11 622 2372
Cell: +27 (0) 74 422 9511,
+27 (0) 82 416 3230

E-mail: geza@icon.co.za
Website: www.geza.co.za

PO Box 15988, Doornfontein 2028, South Africa

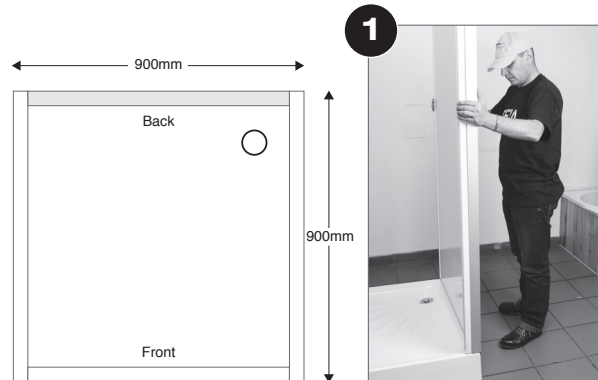
A product of Modular Plumbing Units cc

Pack Elements

- Shower sides pack: 2 x shower sides 900mm x 1800mm
1 x shower back 800mm x 1800mm
- Shower tray : 900mm x 900mm x 150mm including waste and trap
- Shower door or shower curtain (with curtain rail and 2 brackets)
- Shower harness: includes pipework, shower arm, shower rose and mixer
- Hardware: 14 x pop rivets, 2 x L-brackets

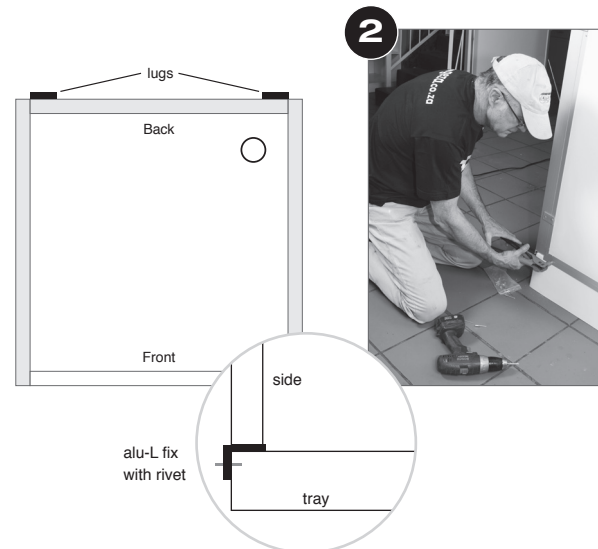
Step 1: Shower Tray and Back Panel

- Place tray in position on floor and drill 50mm hole in side of tray or floor for waste outlet. Connect appropriate length 50mm pvc waste pipe to trap. *Note:* Do not connect 50mm pvc waste pipe to waste stack until shower is fully assembled and positioned.
- Remove plastic skin from shower tray
- Place back panel in position on top of tray (photo 1).



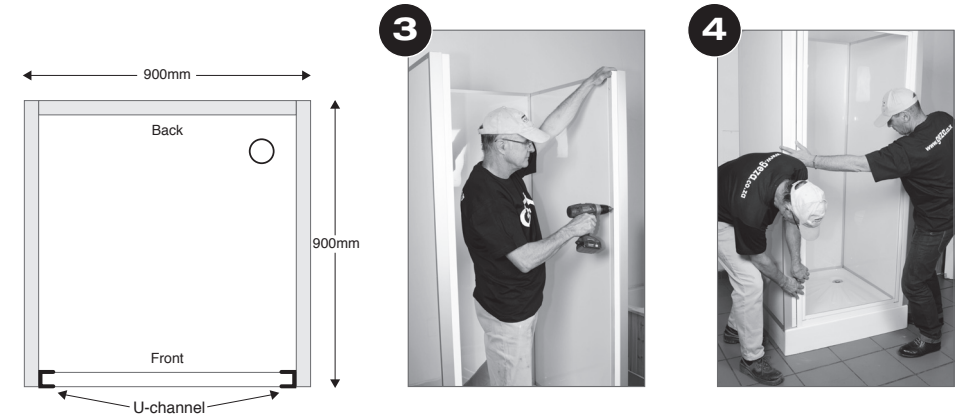
Step 2: Side Panels

- Place side panels on top of tray and flush against back panel
 - Fix side panels to back panel with pop rivets or self-tapping screws through lugs already fixed to back panel
 - Fix side panels to shower tray with rivets or self-tapping screws through aluminium L-section already fixed to bottom of shower sides (photo 2)
- Note:* Ensure that back panel and side panels are pushed firmly down against tray so that compressible strip forms a tight seal between bottom of side and tray. Similarly, ensure that shower side panels are pushed firmly against the shower back panel.



Step 3: Fitting Shower Door

- Remove U-channel from both sides of shower door frame
- Rivet or self-tap both lengths of U-channel flush onto outer edge of shower sides (photo 3)
- Slide door into both lengths of U-channel (photo 4)
- Adjust door so that it is evenly positioned in U-channel. Do not rivet/self-tap door to U-channel until shower is level and fixed in place.



Step 4: Fitting Shower Harness

- Position shower harness in preferred position as close to hot and cold water supply as possible
- Note:* Harness can be positioned on shower sides or back or in the corner
- Drill holes in shower side or back in appropriate position for connection to hot and cold water supply
 - Fix 2 flexi-hoses to harness and push through holes
 - Rivet or screw harness to top of shower side or back (photo 5)

