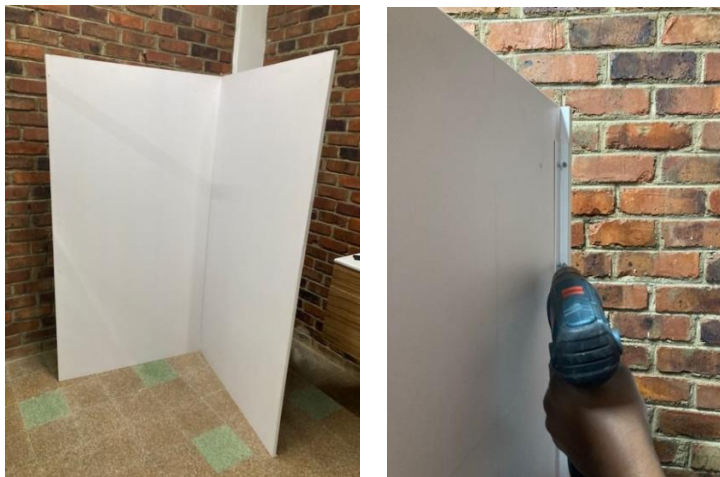


### 3 side PVC shower

- Place tray in position on floor and drill 50mm hole in side of tray or floor for waste outlet. Connect appropriate length 50mm pvc waste pipe to trap. Note: Do not connect 50mm pvc waste pipe to waste stack until shower is fully assembled and positioned



Join the PVC panel which has the aluminium pieces attached to it (back panel), to one of the side PVC panels by using 4x 16mm screws (provided). The back panel must sit on the inside of the side panel. The side panel must be flush to the aluminium. **NOTE THAT THE EDGED LENGTHS OF THE PVC SIDE PANELS ARE FOR THE FRONT OF THE SHOWER WHERE THE DOOR WILL BE.**

Then do the same with the next side panel.



- Once the panels are connected together, place panels on top of tray.
- Rivet the PVC **back panel** onto the tray by first making pilot holes in the tray. The aluminium bracket must sit flush on the tray. Use 3 or 4 rivets.
- **Do not** silicone the side panels and back panels to the tray until the shower has been fully assembled and positioned in place.



- Remove U-channel from both sides of shower door frame
- Rivet or self-tap both lengths of U-channel flush onto outer edge of shower side panels.
- Slide door into both lengths of U-channel.
- Adjust door so that it is evenly positioned in U-channel. Do not rivet/self-tap door to U-channel until shower is level and fixed in place.



- Position shower harness in preferred position as close to hot and cold water supply as possible Note: Harness can be positioned on shower sides or back or in the corner
- Rivet or screw harness to top of shower side or back.
- Use silicone all the way down the side of the harness to the PVC panels.
- **Use a good quality clear or white silicon along the inside edge of the shower back and side panels where they meet the tray.**
- **Silicon other joints where necessary.**