

## GEZA GLASS CORNER SHOWER



Position 3 back panels flush against one another. Drill 4x holes down each side of the center back panel. Use the 8x rivets to connect the panels together (4 rivets down each side).



- Connect the 4 frame pieces together by using the 27mm screws.
- Firstly, connect one straight frame to the 2x curved frame pieces in the holes provided.
- Then follow the same steps to connect the other straight frame to other ends of the curved frame pieces.



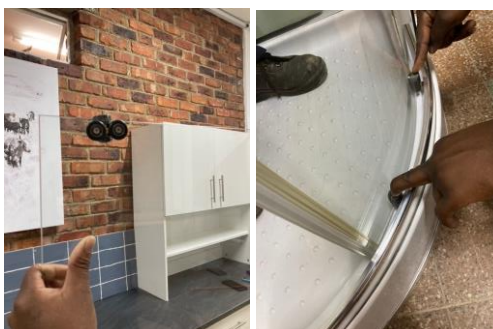
Level Tray. Fit trap. Ensure all legs are touching the ground. If a leg is not touching the ground, the tray will be significantly weaker in that spot. The tray can handle 110kg. If you want to reinforce the tray, mix cement with water and add to large zip lock bags and place under the tray in the positions where there are no legs.



- Place the back panels onto the tray and then add the frame.
- Connect the back panels to the frame using 4x 17mm screws in the holes provided down each side at the back of the panels where they meet the frame.
- Use the thick 27mm screws and nuts to fix the back panels onto the tray in the holes provided. Use a drill to make a pilot hole in the tray.



- Insert one of the flat clear glass panels into the frame.
- From the inside of the shower, press in a clear rubber strip to tighten the glass in place.
- Do the same steps for the other flat clear glass panel on the other end.
- Screw in small silver stoppers in the top and bottom frames at the end of the glass panels.



- Add the double wheels into the holes at the top of the curved glass door sliding panels.
- Add the single wheels, which have springs, to the bottom of the sliding door panels.
- First place double wheels into the channel on the inside of the top frame.
- Clip the bottom wheels into the channel on the inside of the bottom frame by pressing on the springs to extend the wheels to secure them into place.



- **Add magnetic strips to the doors - where the two come together.**
- **The rubber strips with the big lip are for the other ends of the sliding door panels - to close the gap between the fixed piece of glass and the sliding glass.**
- **If magnetic strips do not meet, remove the grey stoppers that are stopping the door on the inside of the top and bottom frames. Then drill new holes in the desired position and re fit the stoppers.**
- **Hang the harness with mixer, rose and arm over the back panel.**
- **Use silicon to secure the harness to the glass back panel.**
- **Use a good quality clear silicon along the inside edge of the shower at the base of the tray.**
- **Silicon other joints where necessary.**